

LED

High Flux LEDs

Feature

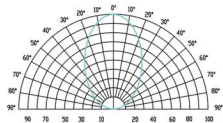
- 5Φ Round Package
- Water Clear
- Viewing Angle(2θ 1/2:70°)

Applications

RED YELLOW GREEN BLUE WHITE

automotive exterior,illumination accessories,electrical appliances.

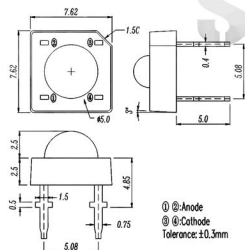
Radiation Diagram



Relative luminous intensity(%)

Outline Dimensions

(Unit:mm)



Absolute Maximum Ratings

Parameter	Symbol	Value		Unit
		S05E/YXXC-1	S05G/B/WXXC-1	
Forward Current	IF	50	50	mA
Peak Forward Current	IFP	200	150	mA
Reverse Voltage	VR	5		V
Operating Temperature	Topr	-30 to +85		°C
Storage Temperature	Tstg	-30 to +85		°C
Soldering Temperature	Tslid	260±5		°C

Note: *1:IFP Conditions --- Pulse Width ≤ 1msec and Duty ≤ 1/10.

*2:Soldering time ≤ 5 seconds.

Characteristics

(Ta = 25°C)

S05EXXC-1	Color	Symbol	Conditions	Min.	Typ.	Max.	Unit
Forward Voltage	Red	V _F	IF=40mA	-	2.3	2.8	V
Reverse Current		I _R	VR=5V	-	-	10	μA
Total Flux		Φ _v	IF=40mA	600	-	4500	lm
Dominant Wavelength		λ _d	IF=40mA	610	-	640	nm
Half Bandwidth		Δλ	IF=40mA	-	16	-	nm

S05YXXC-1	Color	Symbol	Conditions	Min.	Typ.	Max.	Unit
Forward Voltage	Yellow	V _F	IF=40mA	-	2.3	2.8	V
Reverse Current		I _R	VR=5V	-	-	10	μA
Total Flux		Φ _v	IF=40mA	500	-	4000	lm
Dominant Wavelength		λ _d	IF=40mA	580	-	597	nm
Half Bandwidth		Δλ	IF=40mA	-	16	-	nm

S05GXXC-1	Color	Symbol	Conditions	Min.	Typ.	Max.	Unit
Forward Voltage	Green	V _F	IF=40mA	-	3.5	4.5	V
Reverse Current		I _R	VR=5V	-	-	10	μA
Total Flux		Φ _v	IF=40mA	1200	-	9000	lm
Dominant Wavelength		λ _d	IF=40mA	500	-	535	nm
Half Bandwidth		Δλ	IF=40mA	-	35	-	nm

S05BXXC-1	Color	Symbol	Conditions	Min.	Typ.	Max.	Unit
Forward Voltage	Blue	V _F	IF=40mA	-	3.5	4.5	V
Reverse Current		I _R	VR=5V	-	-	10	μA
Total Flux		Φ _v	IF=40mA	500	-	4000	lm
Dominant Wavelength		λ _d	IF=40mA	450	-	480	nm
Half Bandwidth		Δλ	IF=40mA	-	30	-	nm

S05WXXC-1	Color	Symbol	Conditions	Min.	Typ.	Max.	Unit
Forward Voltage	White	V _F	IF=40mA	-	3.5	4.5	V
Reverse Current		I _R	VR=5V	-	-	10	μA
Total Flux		Φ _v	IF=40mA	800	-	6500	lm
Chromaticity Coordinates		X	IF=40mA	0.24	-	0.36	
		Y	IF=40mA	0.25	-	0.37	